

PARLIAMENT

RESOLVED that Parliament in accordance with section 5 of the *Crown Lands (Vesting and Disposal) Act*, Cap. 225 approve the vesting, in the National Housing Corporation, of the parcel of land the property of the Crown situate at Flat Rock, in the parish of Saint George in this Island, formerly the site of a public bath, and more particularly described in the *Schedule* hereto, for housing development.

APPROVED by the House of Assembly this _____ day
of _____, Two thousand and fourteen.

Speaker

APPROVED by the Senate this _____ day of _____,
Two thousand and fourteen.

President

SCHEDULE

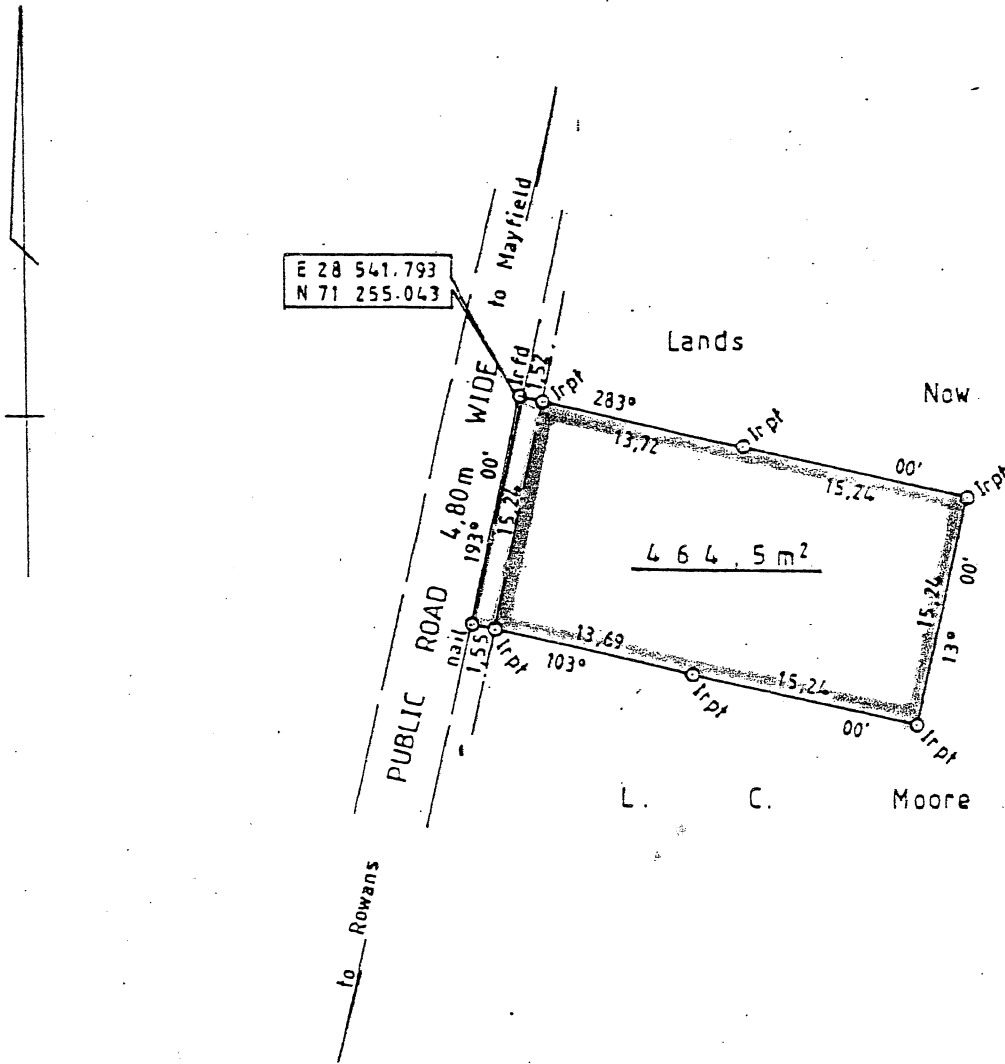
ALL THAT land, the property of the Crown, situate at Flat Rock in the parish of St. George in this Island containing by admeasurement 464.5 square metres or thereabouts inclusive of 23.1 square meters of road reserve abutting and bounding on lands now or late of L.C. Moore on three sides and on a public road 4.8 metres wide leading to Rowans in one direction and to Mayfield in the other direction or however else the same may abut and bound as shown and delineated on a Plan certified on the 4th day of June, 1991 by James A. Browne, Land Surveyor and recorded in the Lands and Surveys Department on the 6th day of June, 1991 as Plan No. 554/91.

ADDENDUM

On the 22nd day of November, 2012 the Cabinet agreed to the vesting of 464.5 square metres of Crown land situate at Flat Rock in the parish of St. George in the National Housing Corporation.

The said land more particularly described in the *Schedule* hereto was acquired on the 16th day of August, 1971 in accordance with section 5 of the *Land Acquisition Act*, Cap. 228 as evidenced by Statutory Instrument No. 140 of 1971.

In accordance with the provisions of section 5 of the *Crown Lands (Vesting and Disposal) Act*, Cap. 225, the approval of Parliament is now sought for the vesting in the National Housing Corporation of the parcel of land more particularly described in the *Schedule* to this Resolution.



Or
 Formerly

Barbados

PLAN OF LAND bordered green and brown
 at FLAT ROCK, ST. GEORGE
 containing

Land	441.4 m ²
Road Res.	23.1 m ²
TOTAL	464.5 m²

surveyed for THE MINISTRY OF HOUSING AND LANDS
 Certified 4th June 1991

SCALE 1 : 500

Distances are in metres.
 Bearings are referred to Grid North
 derived from S6 and M2A

For Lands and Surveys Dept. only

